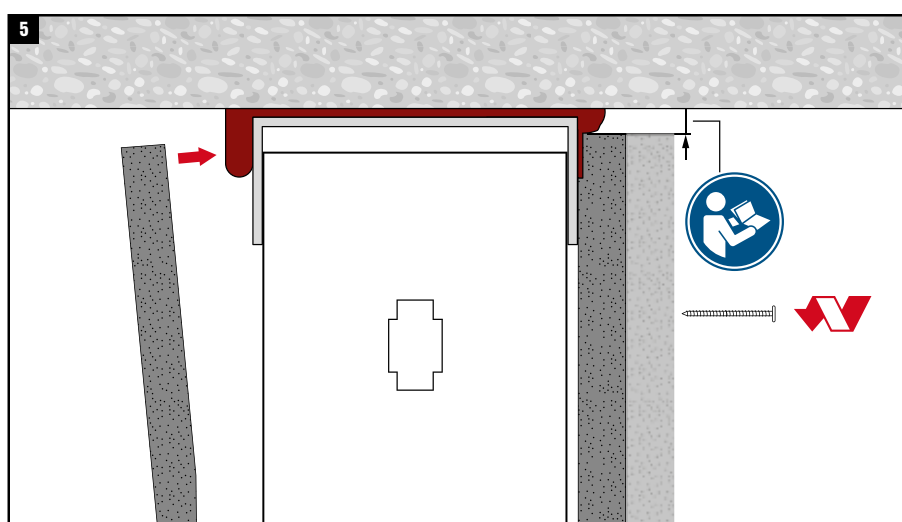
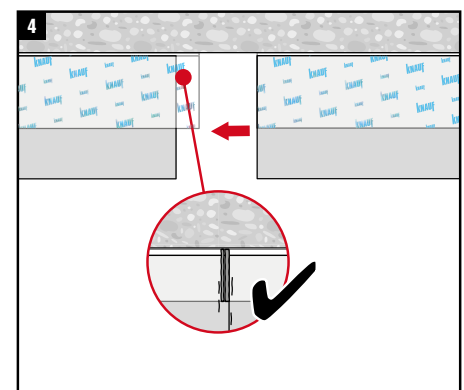
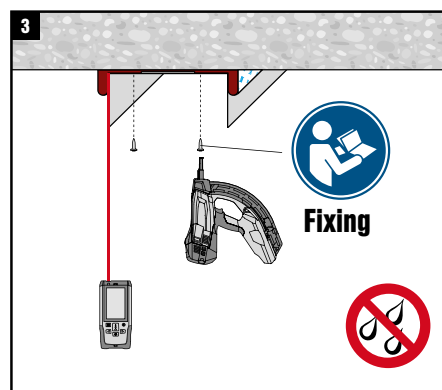
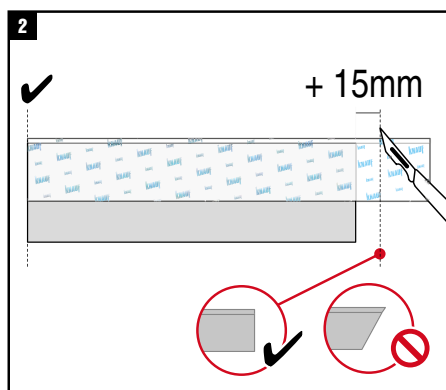
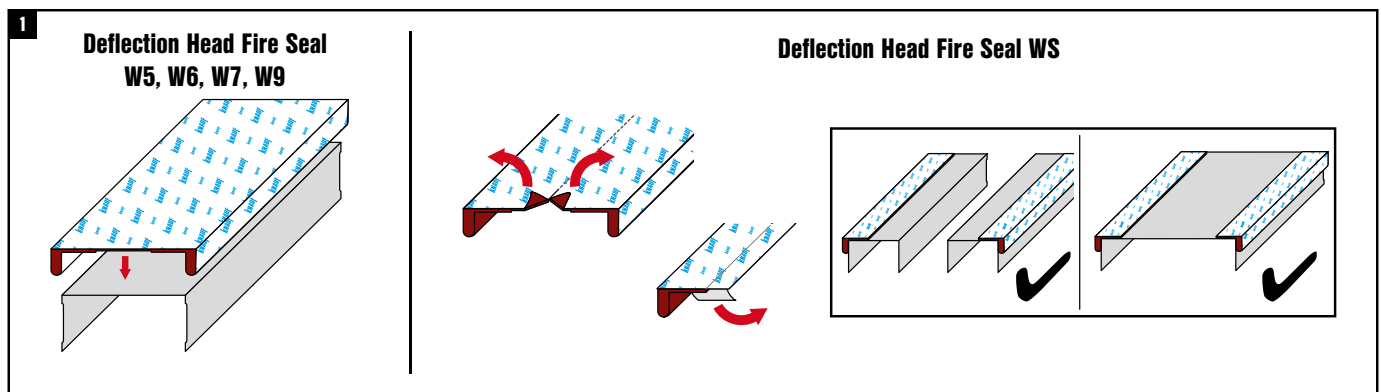


Knauf Deflection Head Fire Seal Installation Guidance

Knauf Deflection Head Fire Seal is used at the deflection head detail of drywall partition systems to provide an effective smoke and acoustic barrier. Maximum deflection allowance 25mm downward. Designed for indoor use in dry conditions.



www.knauf.co.uk
 Technical Service
 UK Tel: 0800 030 4135
 Eire Tel: 01 4620739
 Email: technical@knauf.co.uk