



SI-AT-A22



SIW 6AT-A22



1

1x 1x

MQN... MQW-Q2

unused/
ungebraucht/
inutilisé

2

1x

1x !

A 3

B 3

C 3

MQN-C

MQN-B

4

OK

1 sec

4

OK

1 sec

4

MQN C/CP

OK

1 sec

5

MQN C/CP

OK

6

MQN C/CP

OK

5

MQN C/CP

MQN B

OK

6

MQN C/CP

OK

SI-AT-A22

7

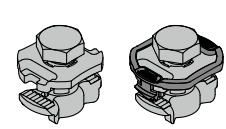
MQN C/CP

OK

6

MQN B

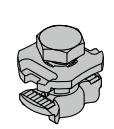
OK



MQN C/CP



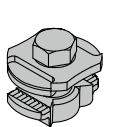
MQN C/CP V02 1



MQN-C+
(MQN-C HDG Plus)



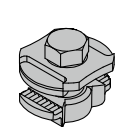
MQN-C+ V01 1



MQN



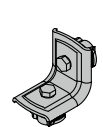
MQN V01 1



MQN+
(MQN HDG Plus)



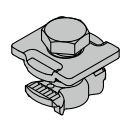
MQN+ V01 1



MQW-Q2



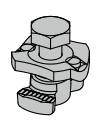
MQW-Q2 V01 1



MQN-B



MQN-B V01 1



MQN R(A4)



MQN R(A4) V01 1

7

MQN.../
MQW...

MQN C/CP

OK

8

MQN.../
MQW...

MQN C/CP

OK

7

MQN B

OK

8

MQN C/CP

OK

9

MQN C/CP

OK

8

MQN B

OK

1

MQN... MQW-Q2

! unused/
ungebraucht/
inutilisé

2

✓ ✗ ✓

! ! !

min. 0mm

7

max. 1x

1x! 2x! 4x!

SI-AT-A22
SIW 6AT-A22

3

MQN.../
MQW.../

! ✓

MQN C/CP

8

1. X.

SI-AT-A22

4

SI-S 1/2"-17L

S-TB

9

! !

10

Disassembly/Demontage/
Démontage

5

! ✓

0mm

6

! !