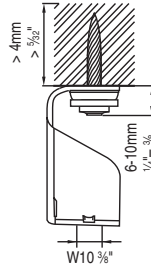
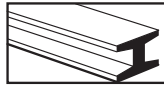
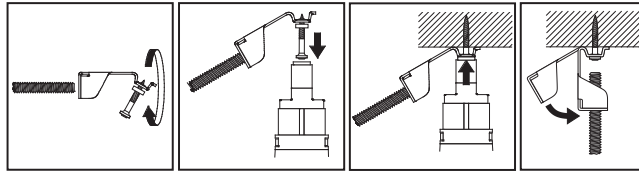


X-HS W10 U19 P8 S15 # 386217





für/for/pour-
DX 460 F8
DX 351 F8
DX 36


387204



Suitable for indoor use in other than wet locations.
Cat. No. X-HS W10 U19 P8 S15 installed in 1/4 in. steel plate is suitable for support of maximum 2 inch Trade Size EMT, RMC and IMC and 3 inch Trade Size Rigid PVC conduit on maximum 10 ft. spacing.

 **US LISTED**
CONDUIT AND CABLE HARDWARE
9DX1

 **APPROVED**

 **ESR-2795**