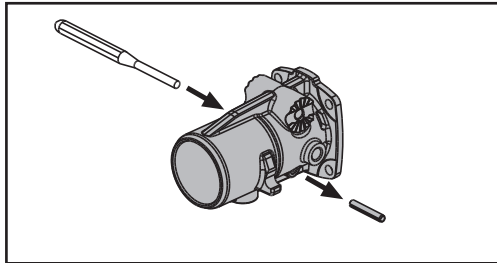
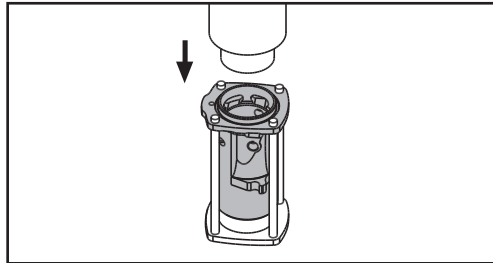


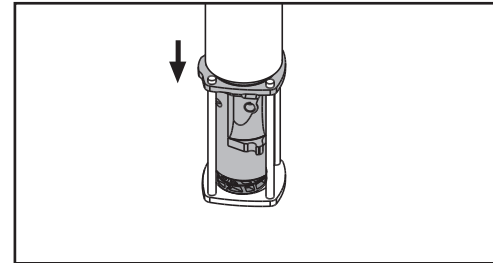
Disassembly / Desmontaje:



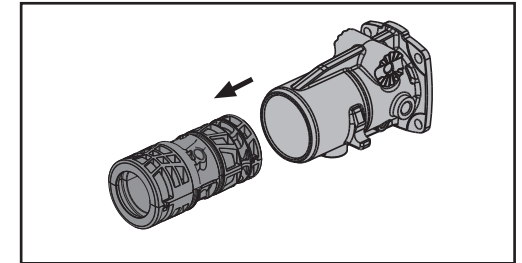
- Remove the toolholder from the tool (4 screws).
- Remove the retaining pin from the toolholder.
- Extraer el portaherramientas de la herramienta (4 tornillos).
- Extraer la clavija de retención del portaherramientas.



- Place toolholder on a stand.
- Insert fitting rod.
- Colocar el portaherramientas en un soporte.
- Introducir la barra de soporte.

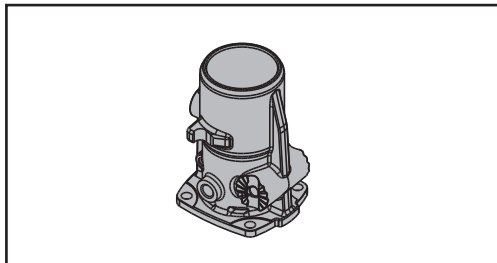


- Using a press (recommended) or a hammer to remove the bushing assembly from the toolholder.
- Utilizar una prensa (recomendada) o un martillo para extraer el casquillo del portaherramientas.

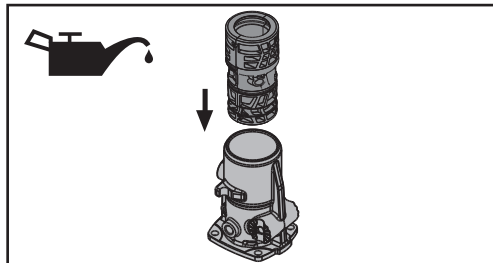


- Discard bushing assembly.
- Desechar el casquillo.

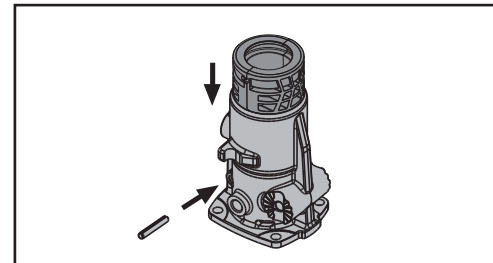
Assembly / Montaje:



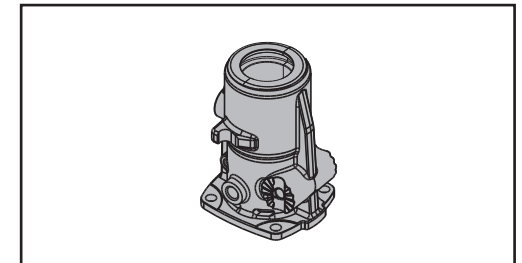
- Place toolholder on a flat surface.
- Colocar el portaherramientas en una superficie plana.



- Insert bushing assembly by hand.
- Introducir el casquillo a mano.



- Use a press (recommended) or a hammer to fit the bushing assembly into the toolholder.
- Insert retaining pin into the toolholder.
- Utilizar una prensa (recomendada) o un martillo para encajar el casquillo en el portaherramientas.
- Introducir la clavija de retención en el portaherramientas.



- Connect toolholder to tool.
- Conectar el portaherramientas a la herramienta.